

Regional Development in Central and Eastern Europe

Workshop 1.1.

CEE: a traditional periphery or a new growth pole?

Strategic concept of Romania's spatial development and integration
within EU spatial structures 2007-2030.

Ensuring the conditions for a balanced sustainable development of
the national territory as part of the EU competitive potential

Warsaw, 20-22 September 2007

Mihaela Vrabete

Advisor of Minister of Development, Public Works and Housing

STRATEGIC CONCEPT OF ROMANIA'S SPATIAL DEVELOPMENT AND INTEGRATION WITHIN THE EU SPATIAL STRUCTURES 2007-2025

OVERALL OBJECTIVE

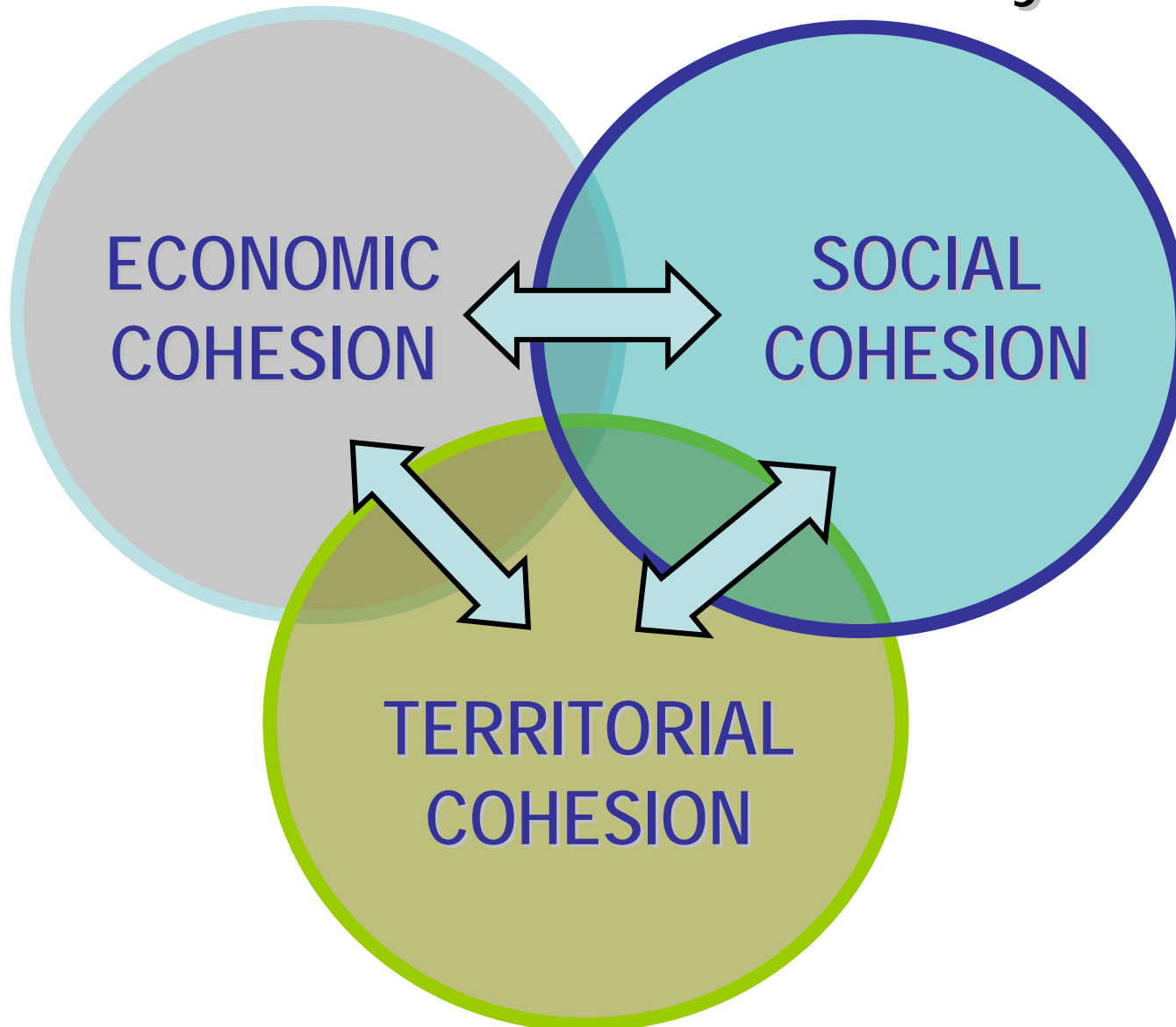
- ROMANIA'S INTEGRATION WITHIN THE EUROPEAN UNION THROUGH REGIONAL-CONTINENTAL IDENTITY AFFIRMING, SPATIAL COHESION STRENGTHENING AND SUSTAINABLE DEVELOPMENT
 - ROMANIA'S REGIONAL- EUROPEAN IDENTITY – articulation between north-south and east-west and intercontinental connector
 - SUSTAINABLE SPATIAL DEVELOPMENT – articulates and balances in time and space the protection of the natural and built environment, economic development and social equity.

STRATEGIC CONCEPT OF ROMANIA'S SPATIAL DEVELOPMENT AND INTEGRATION WITHIN THE EU SPATIAL STRUCTURES 2007-2025

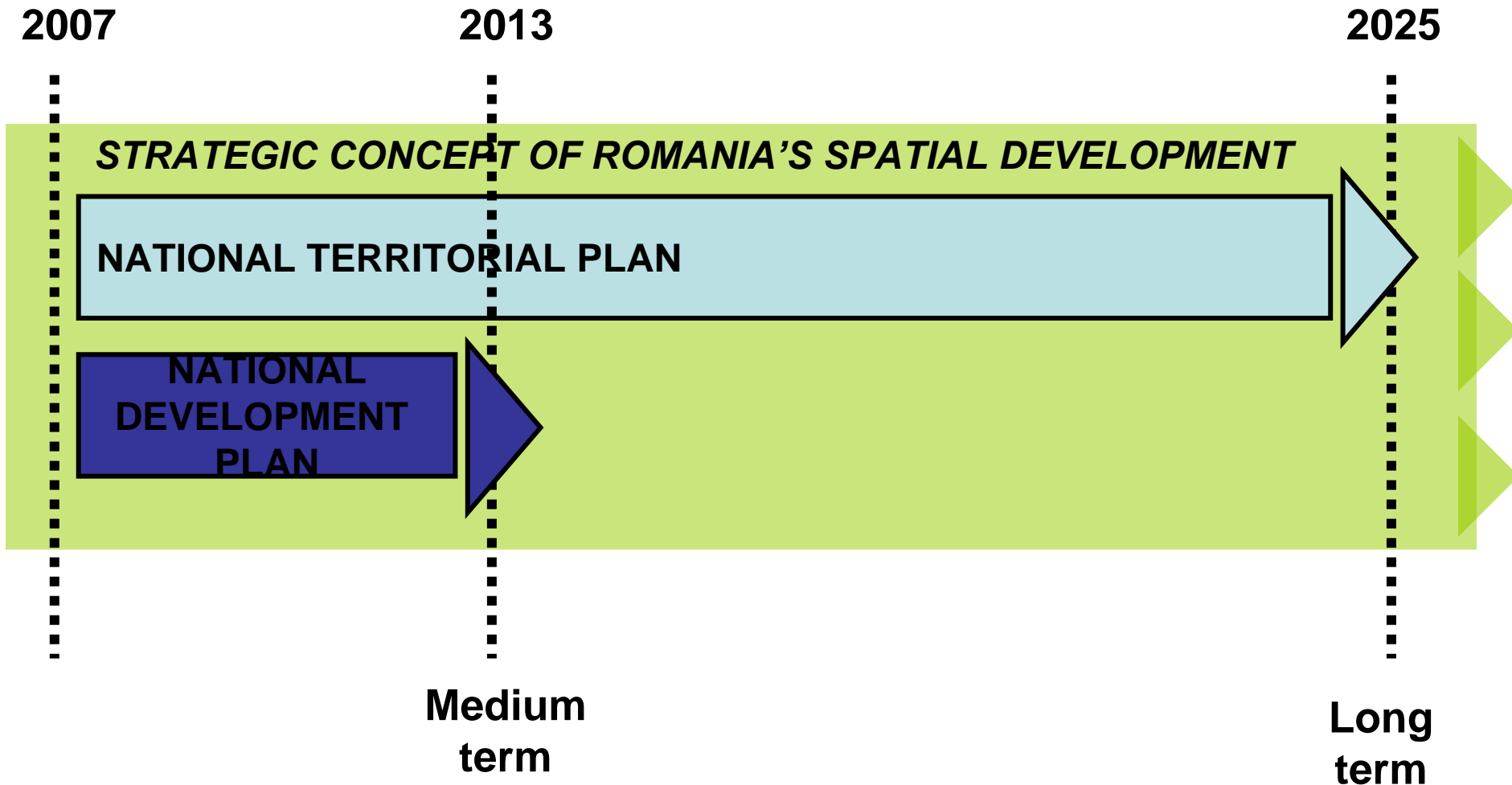
STRATEGIC OBJECTIVES

- I. Joining the european and intercontinental spatial network of development poles and corridors**
- II. Structuring the urbanization reinforcement through balanced development of the localities network**
- III. Adequate urban-rural solidarity assertion according to various territory categories**
- IV. Trans-Carpathian connections reinforcement as a support for balanced regional development**
- V. Protection and capitalization of the natural and cultural patrimony**

Territorial Cohesion and Synergy

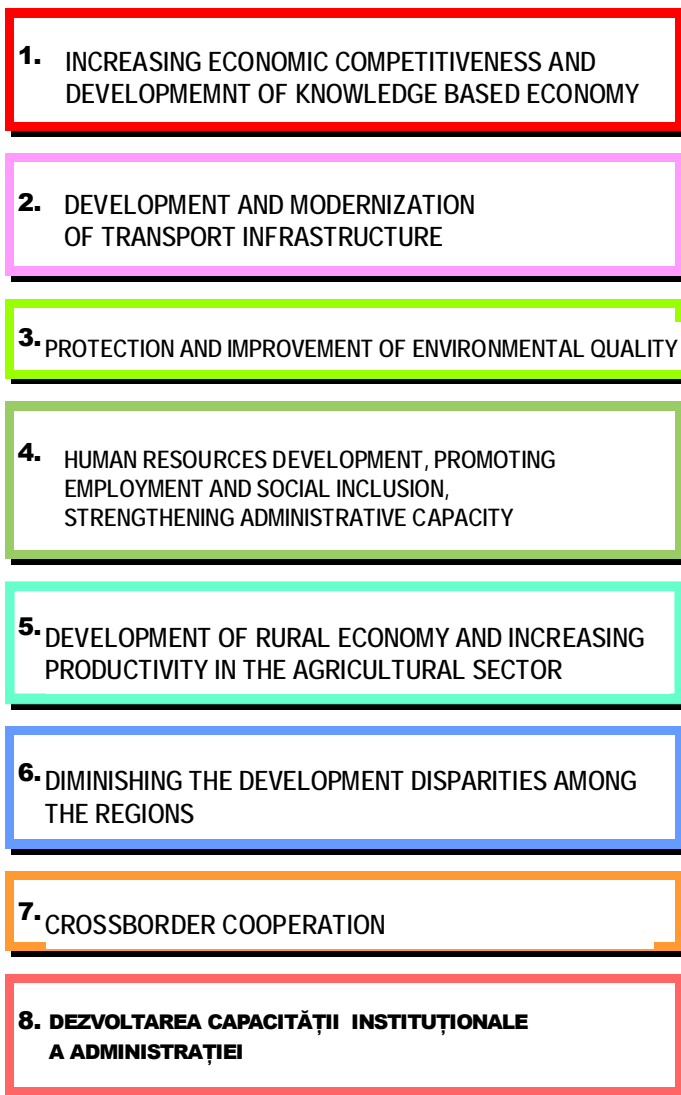


Maximising the impact in using the structural instruments



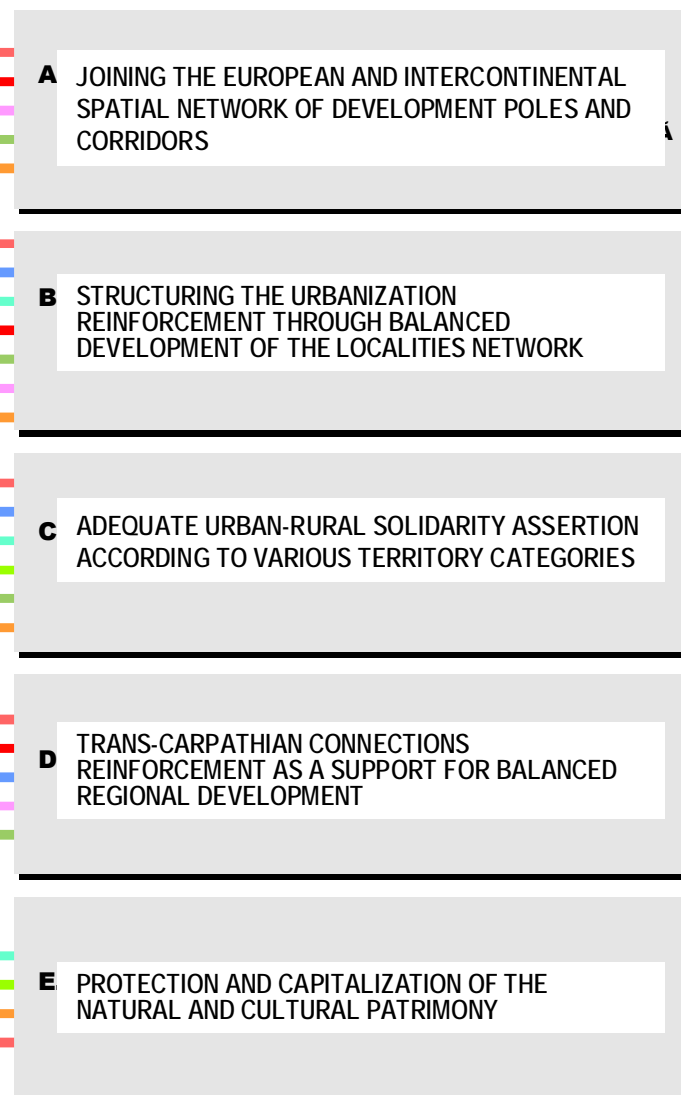
NATIONAL DEVELOPMENT PLAN 2007-13

STRATEGIC OBJECTIVES

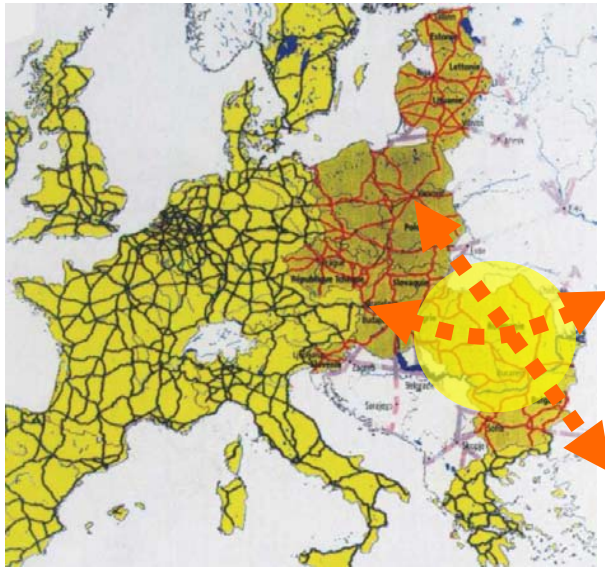


STRATEGIC CONCEPT OF ROMANIA'S SPATIAL DEVELOPMENT 2007-30

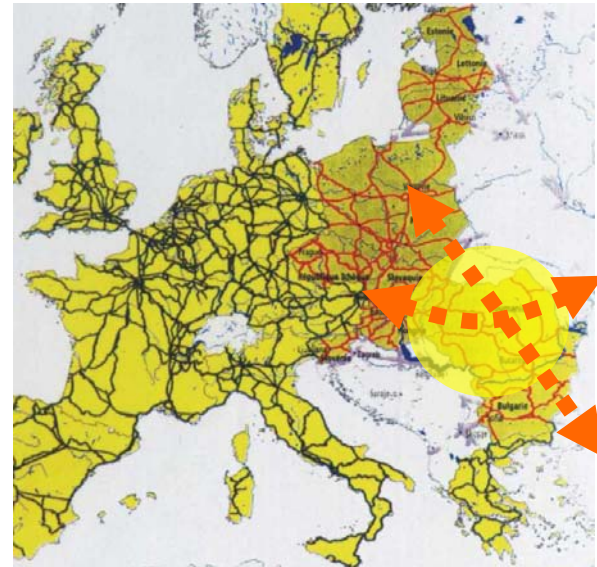
STRATEGIC OBJECTIVES



Joining the european and intercontinental spatial network of development poles and corridors



ROADS NETWORK - TINA

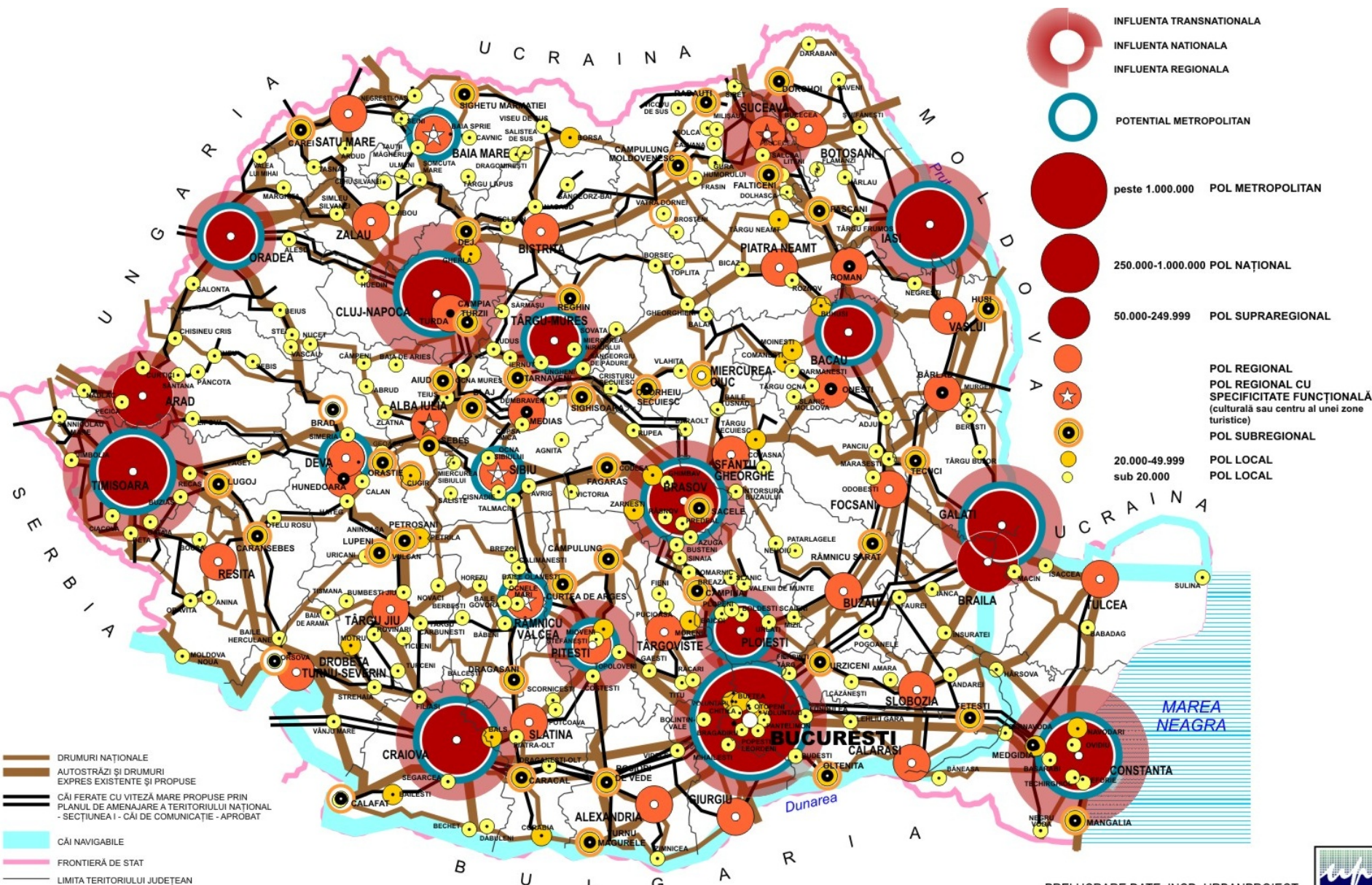


RAILWAYS NETWORK - TINA

POLYCENTRIC STRUCTURE

- *MEGA* **METROPOLITAN POLES WITH INTERNATIONAL VOCATION**
BUCHAREST
TIMISOARA, CONSTANTA, CLUJ, IASI
300 000 INH.
- *OPUS* **NATIONAL POLES (WITH *FUA* POTENTIAL) AND LONG-TERM *MEGA* POTENTIAL**
250 000 INH
- *OPUS* **SUPRAREGIONAL POLES (WITH *FUA* POTENTIAL)**
50 000 – 250 000 INH
- *OPUS* **REGIONAL POLES (WITH *FUA* POTENTIAL)**
50 000 – 250 000 INH
- *OPUS* **REGIONAL POLES (WITH *FUA* POTENTIAL) WITH FUNCTIONAL SPECIFICITY**
ALBA IULIA, BAIA MARE, RAMNICU VALCEA, SIBIU, SUCEAVA, TULCEA
- **SUBREGIONAL POLES**
30 000 – 50 000 INH
- **LOCAL POLES**
UP TO 20 000 INH

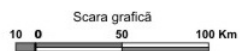
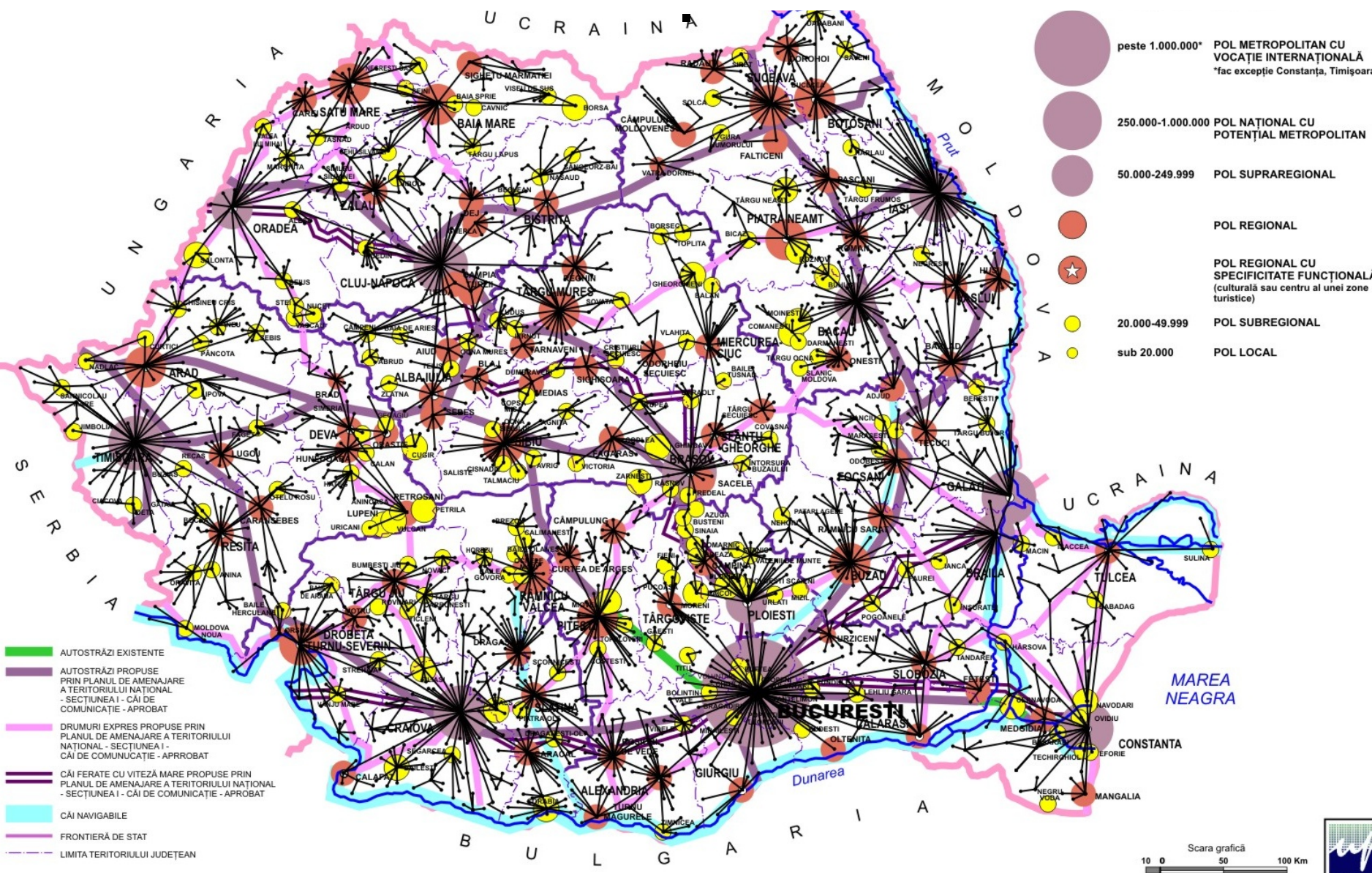
THE CURRENT STRUCTURE OF POLES AND TERRITORIAL NETWORKS



PRELUCRARE DATE: INCD URBANPROIECT

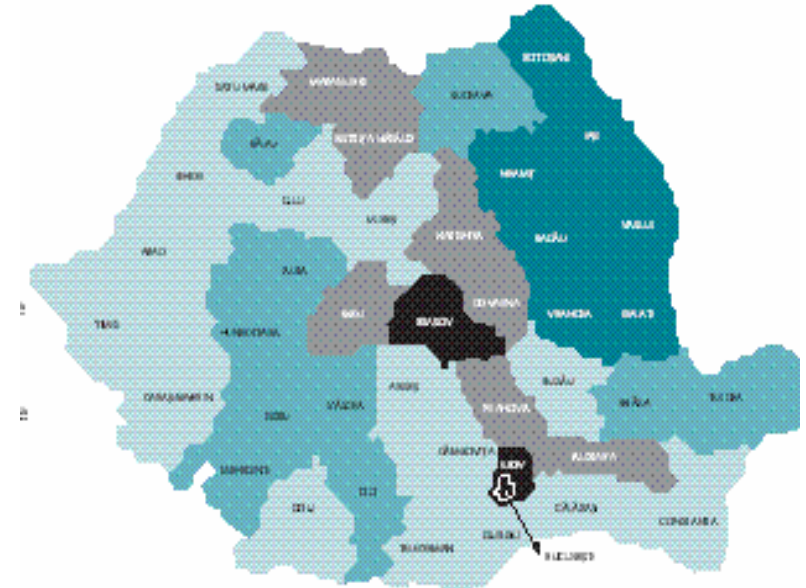
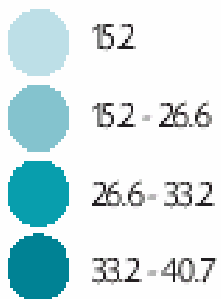
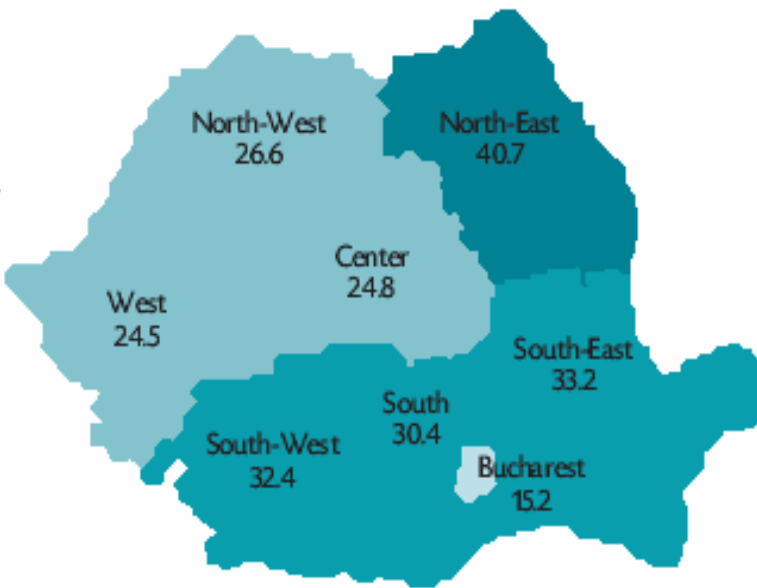


URBAN-RURAL RELATIONSHIPS



POVERTY MAP – COUNTIES AND REGIONS

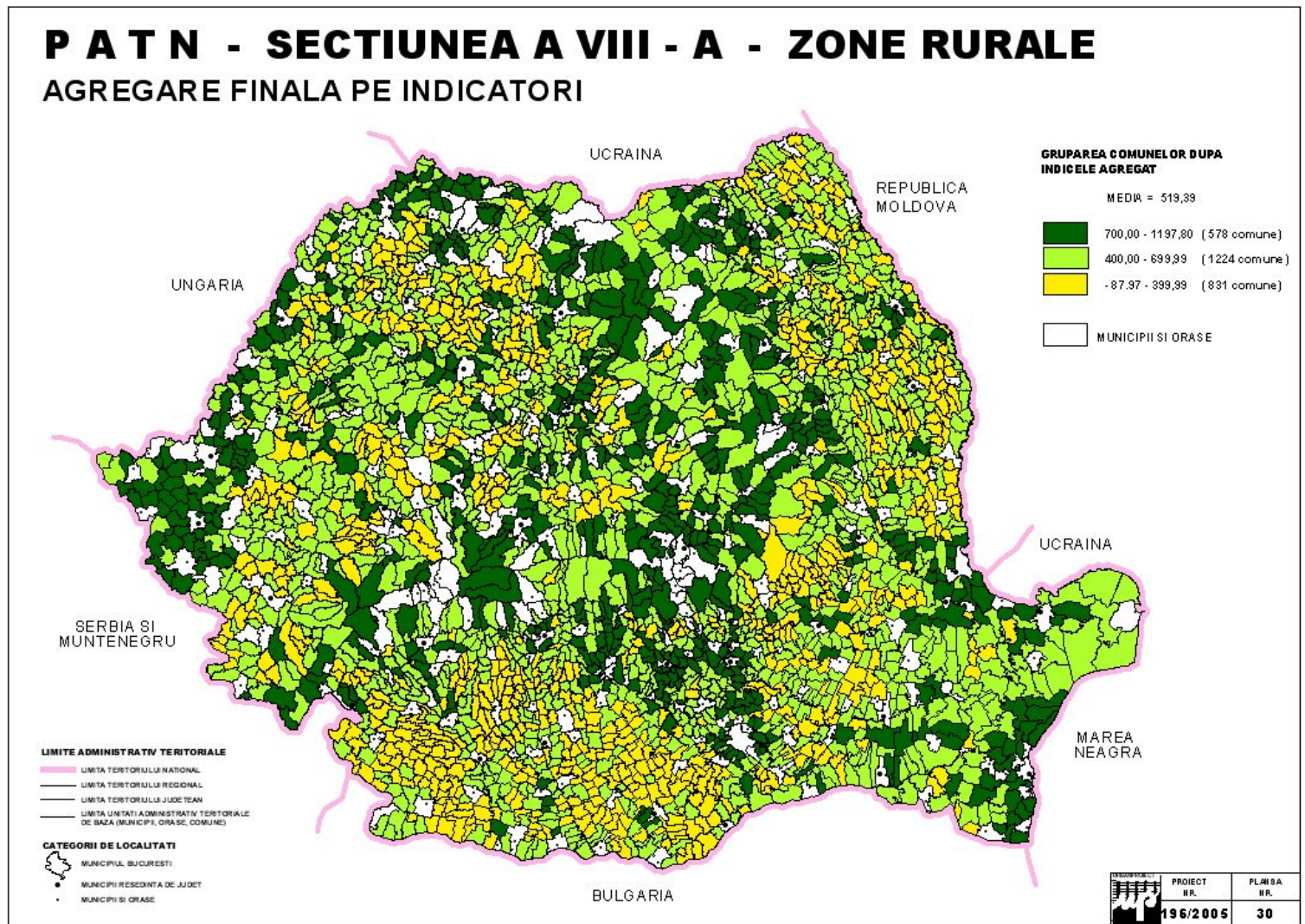
Social Development National Report 2003-2005



Rural Development State

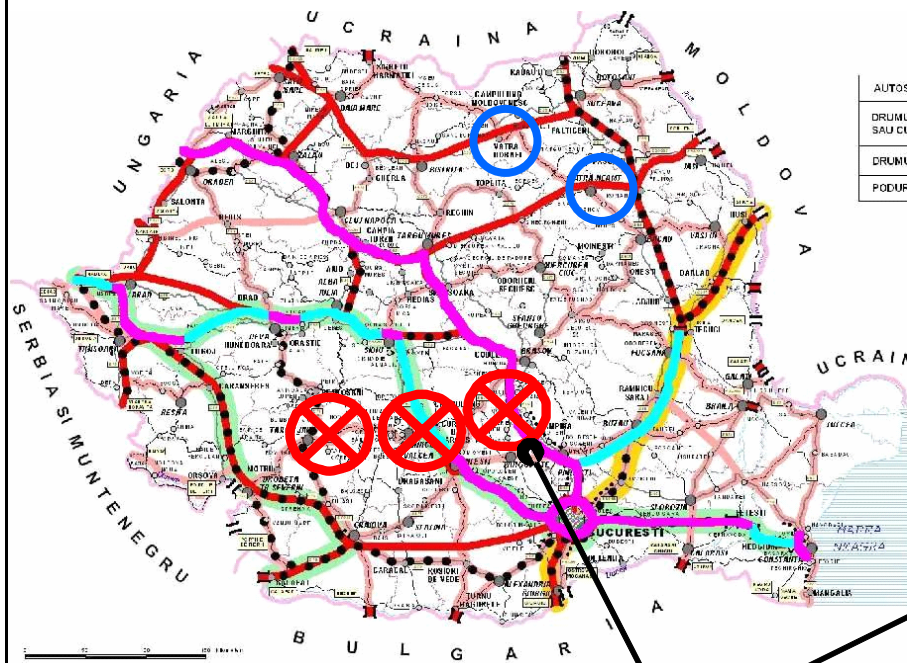
Integrated indicators

(environment, demography, social, housing, infrastructure, economy)

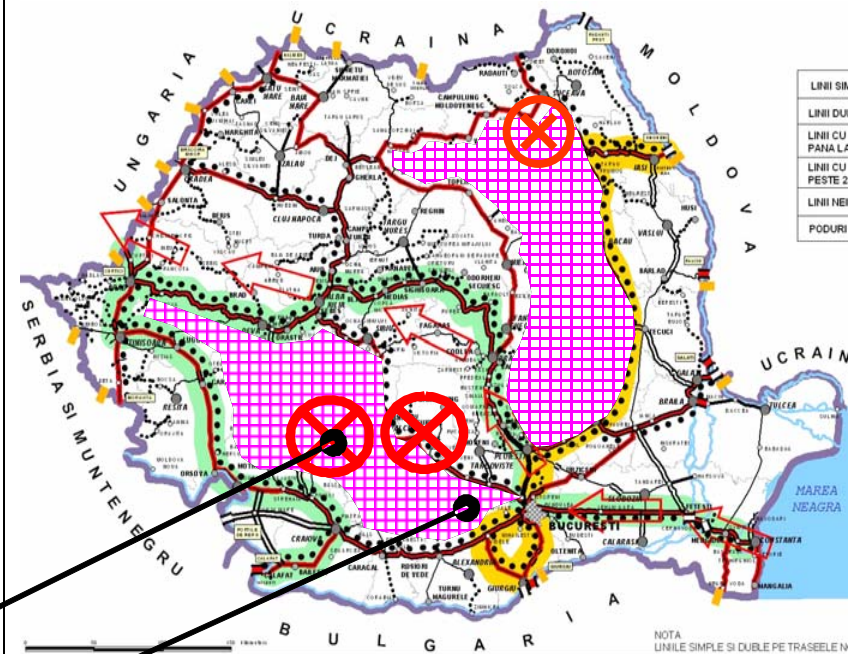


Strengthening trans-Carpathian connections in support of the balanced regional development

NTP – ROADS NETWORK



NTP – RAILWAYS NETWORK



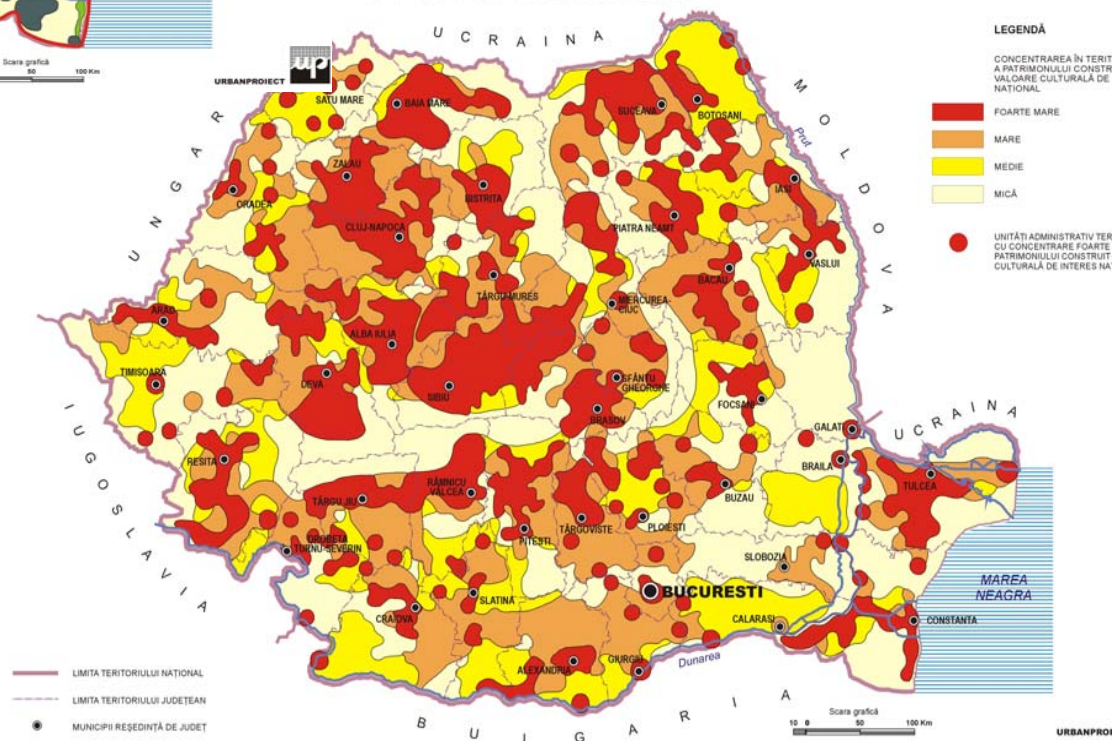
- Vulnerable links

- Areas with weak inter-regional links

PROTECTED NATURAL AREAS



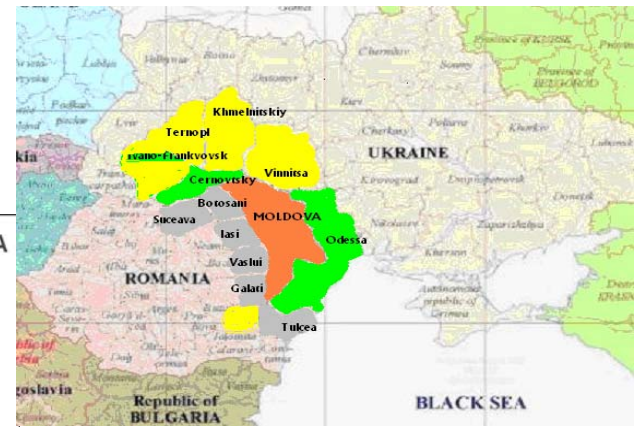
PROTECTED CULTURAL PATRIMONY



OP RO-HU



OP RO-SLVK-UKR-MO



OP RO-UKR-MO

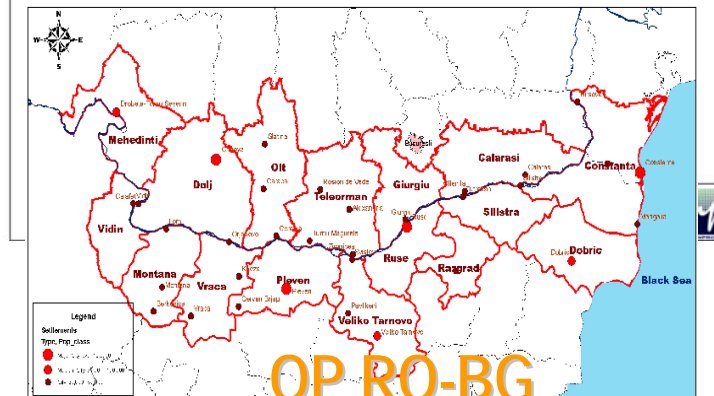
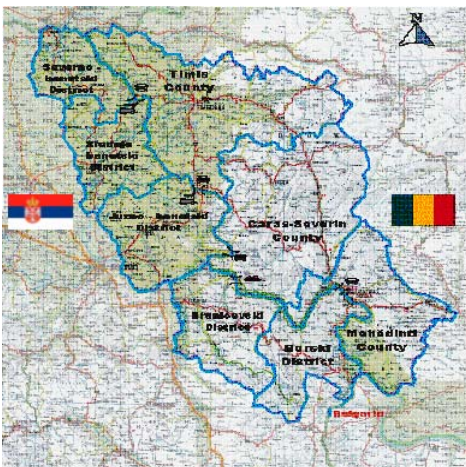
Programul de cooperare ENPI CBC in bazinul Marii Negre
Aria Programului



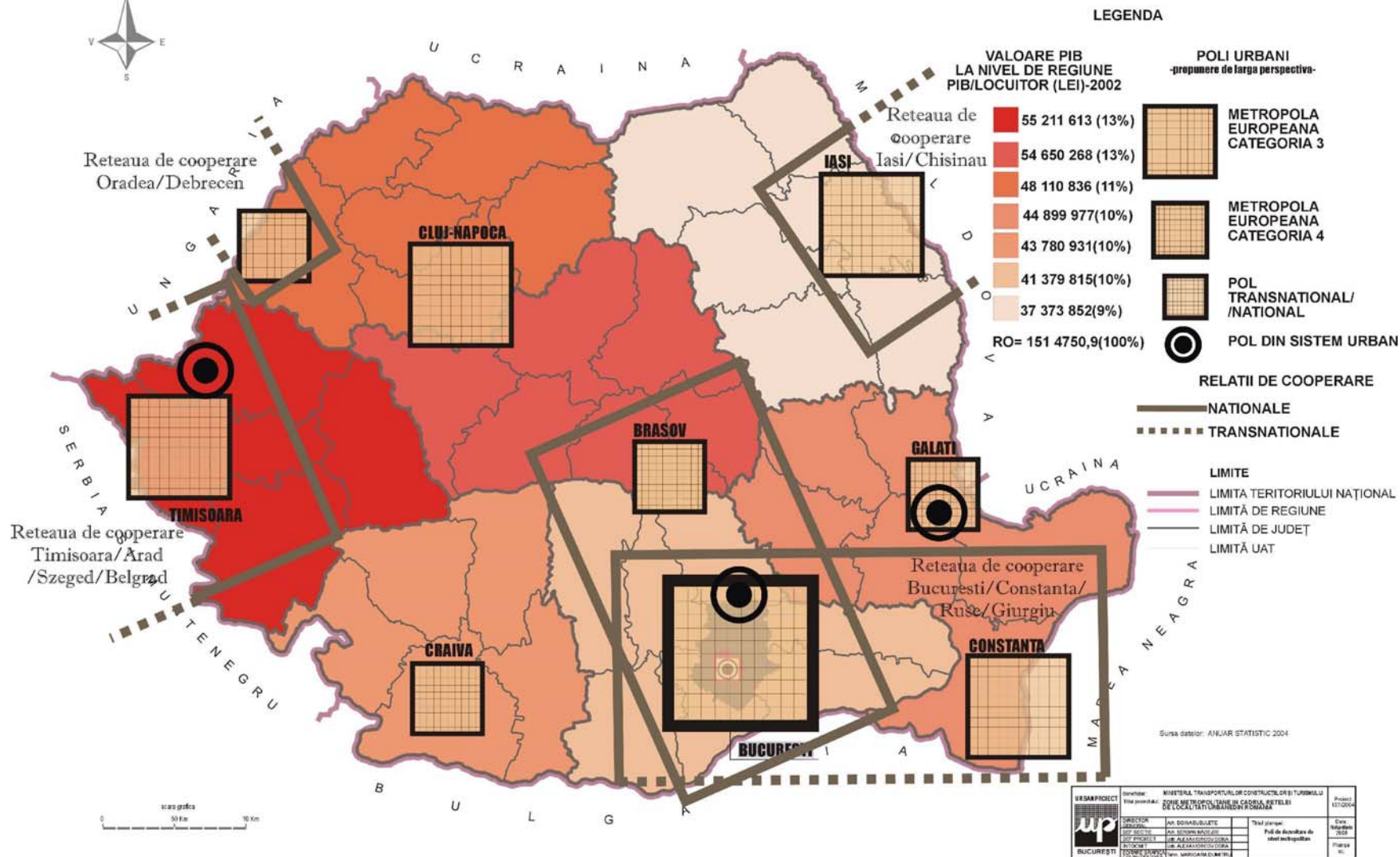
OP BLACK SEA

Crossborder
Cooperation

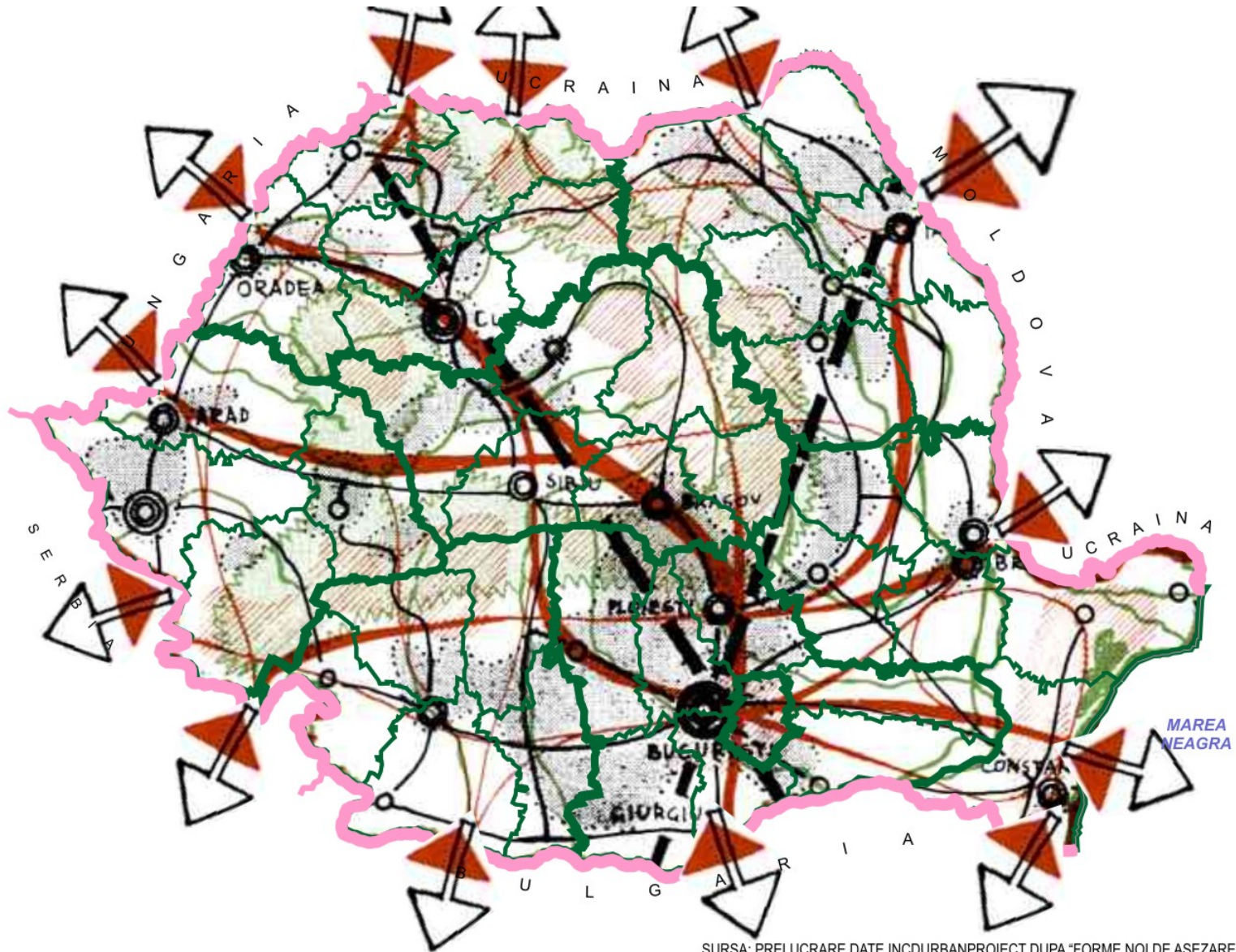
OP RO-SE



OP RO-BG



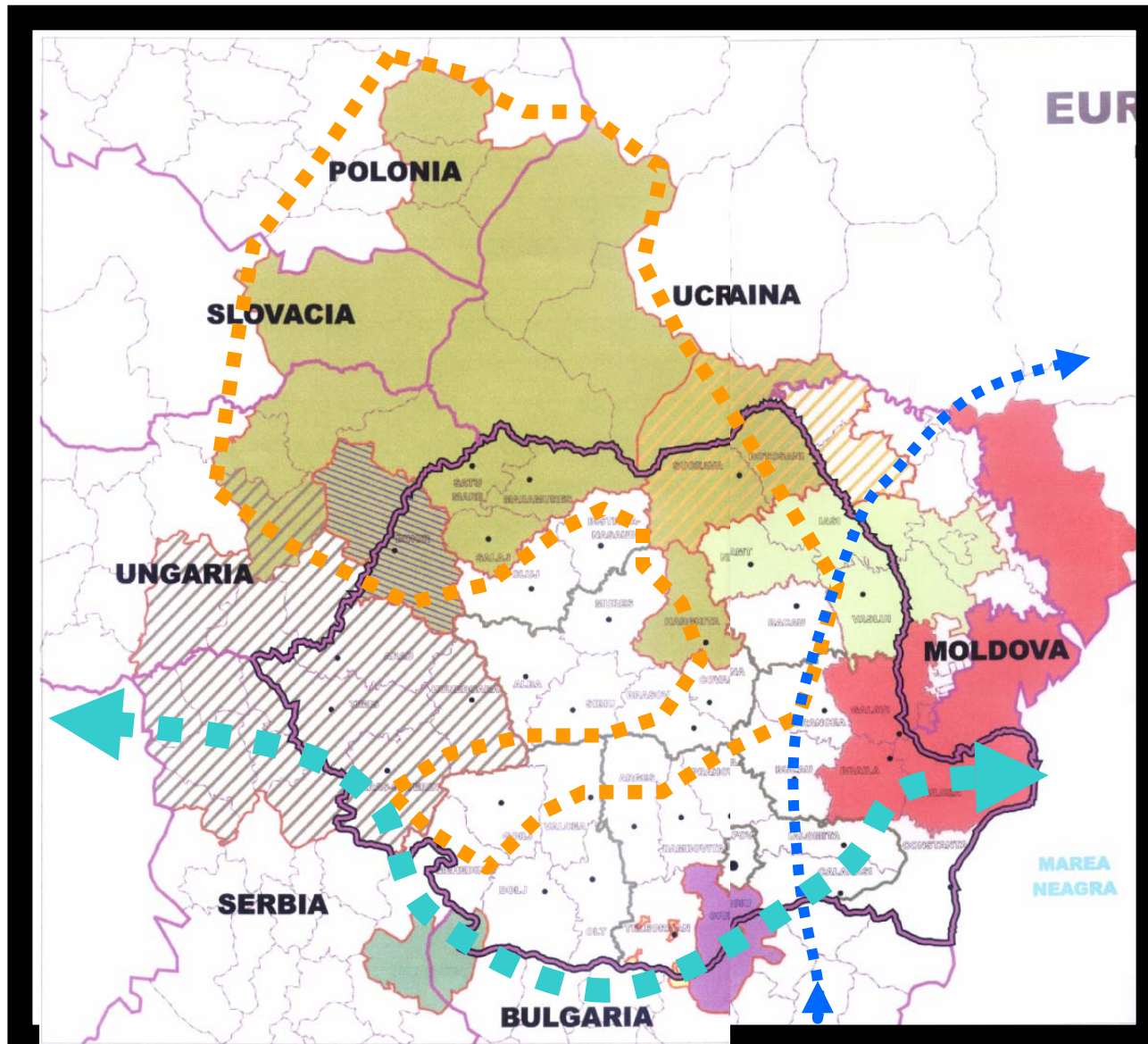
ROMANIA'S POTENTIAL FOR CROSS-BORDER AND EUROPEAN COOPERATION



SURSA: PRELUCRARE DATE INCURBANPROIECT DUPA "FORME NOI DE ASEZARE", G. GUSTI, 1977



STRENGTHENING THE COOPERATION IN CARPATHIAN, TISA, DANUBE AND BLACK SEA AREALS

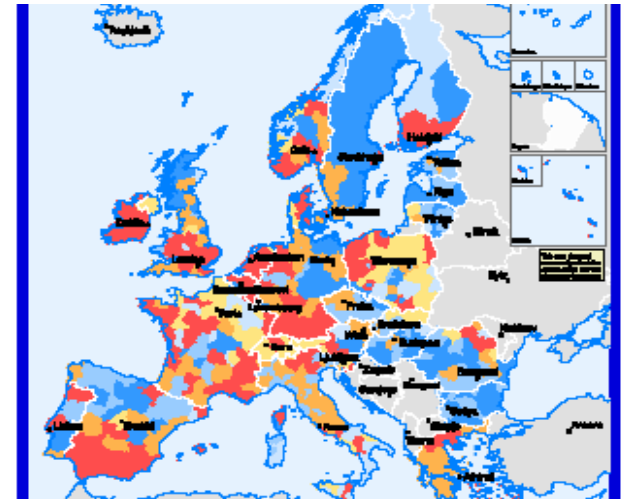


Territorial Cooperation



PO SEE

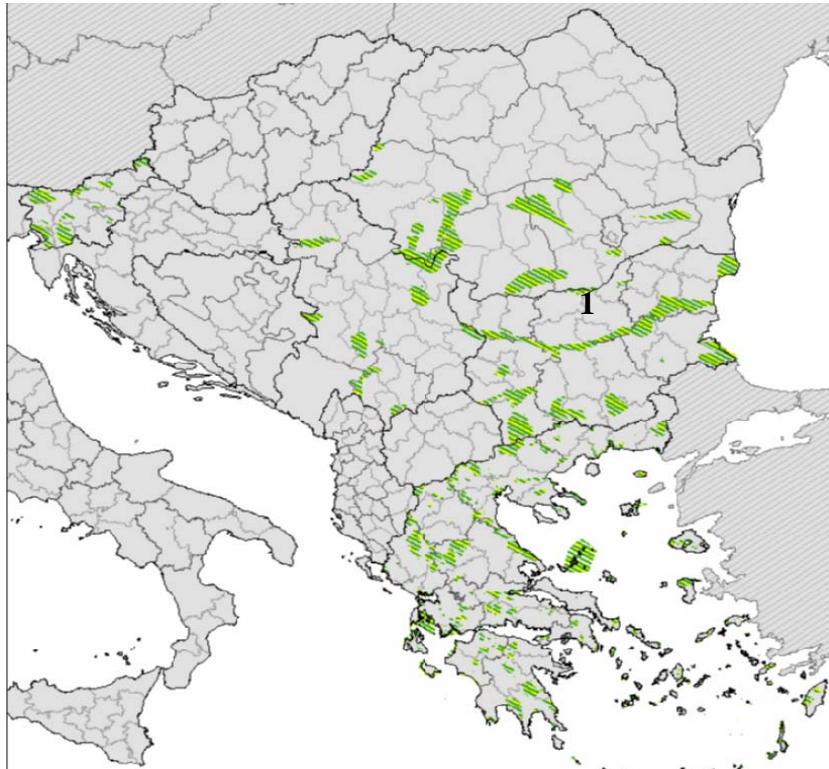
ESFON



INTERREG IVC



NATURAL PASSAGES AND PROTECTED AREAS IN SOUTH-EASTERN EUROPE

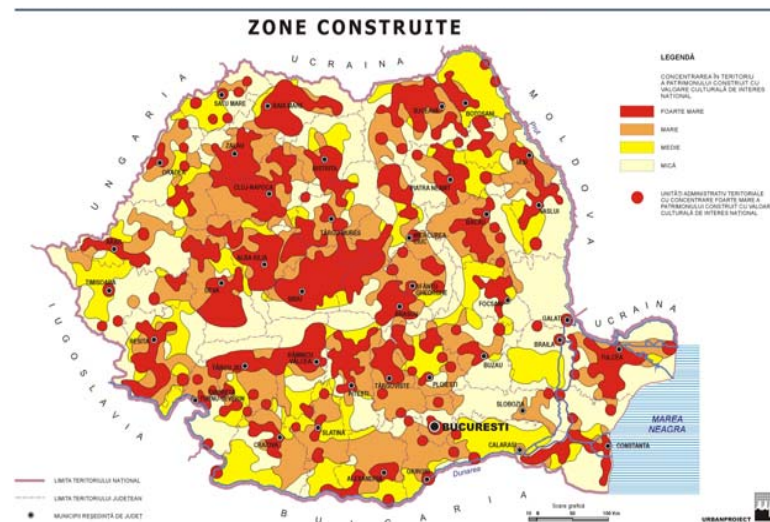
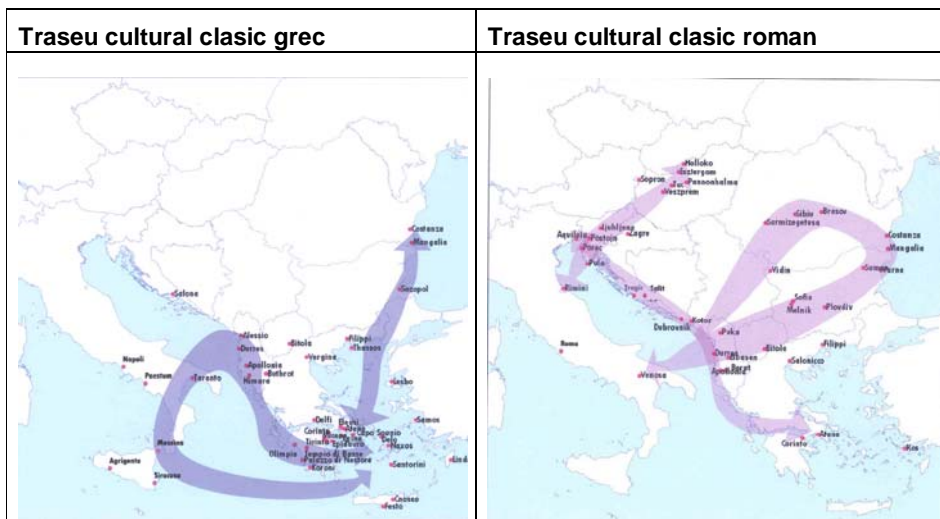


PLANUL DE AMENAJARE A TERITORIULUI NATIONAL SECTIUNEA a III-a - ZONE PROTEJATE



Sursa: - ESTIA-SPOSE WP3: PILOT APPLICATIONS
OF INDICATORS, WP3.4:Final "The territorial
Cohesion Potential" and 3.3 "Territorial Integration
Perspectives" - A T H E N S, M a r c h 2 0 0 6

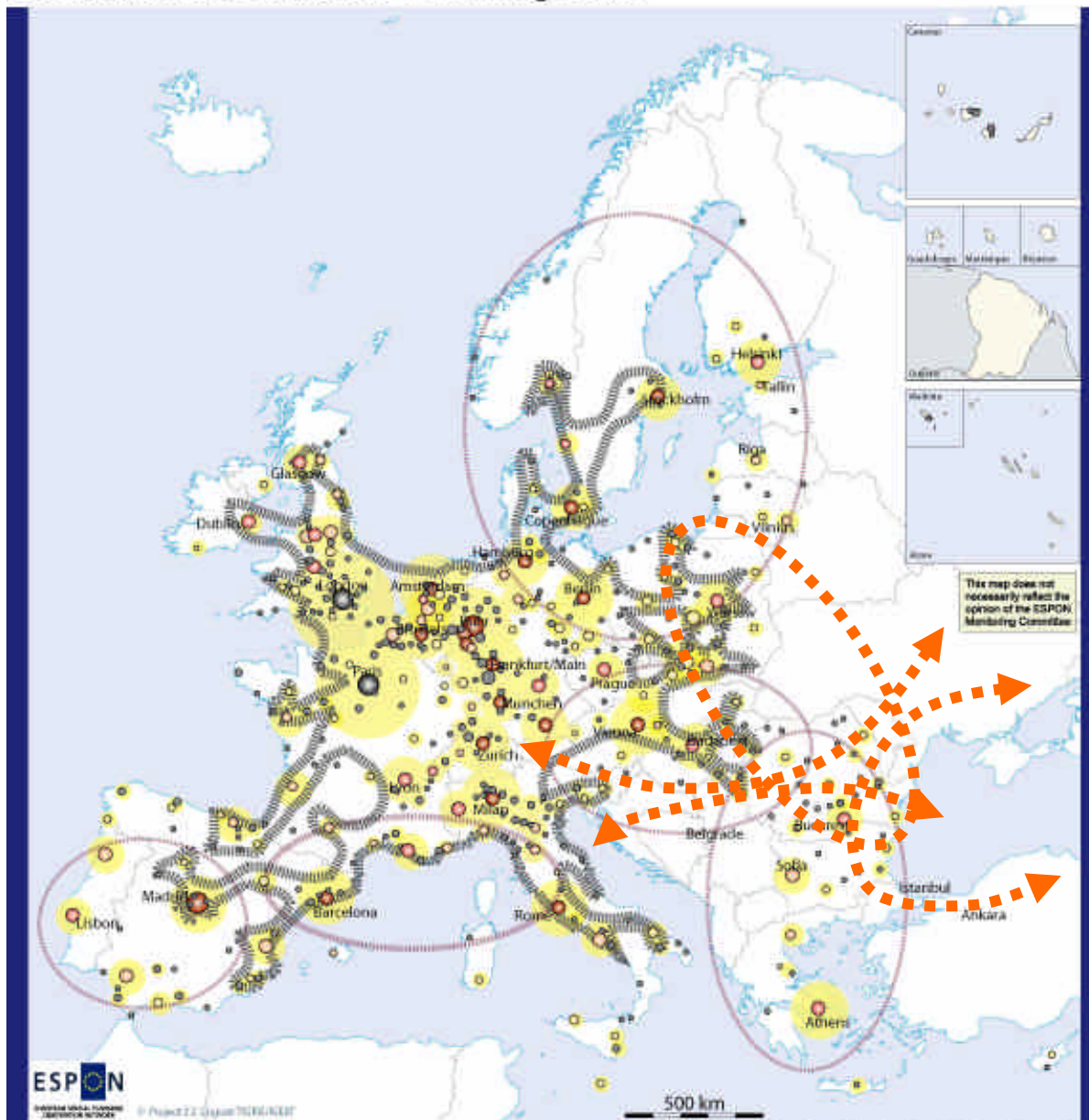
Cultural lines – *ESTIA , MANAGEMENT OF RESOURCES (CULTURAL HERITAGE), 2nd FINAL DRAFT STUDY, BOLOGNA* JANUARY 2 0 0 6



-PATN Secțiunea 3 zone protejate

There are left out all categories regarding prehistoric values, medieval and ethno-cultural values presenting Romania, and consequently, cultural routes are missing (related to the civilization Cucuteni, Porolissum, to the dacian fortresses and bizantin fortress Păcuiul lui Soare, related to the sits and to the medieval architectural monuments –Romanian and Saxon from Transylvania – or the rural patrimony)

Cohesion-Oriented Scenario - Final image 2030



ESPON
EUROPEAN SPATIAL PROGRAMME
ANALYSIS AND MONITORING

© Project 22, August 2004/2005

© EuroGeographics Association for the administrative boundaries

Urban typology: Global City European Engine Strong MEGA Potential MEGA Weak MEGA Regional/Local City

Attraction and polarisation potential of metropolitan areas



Area of concentration of flows and activities



Emerging peripheral integrated zone



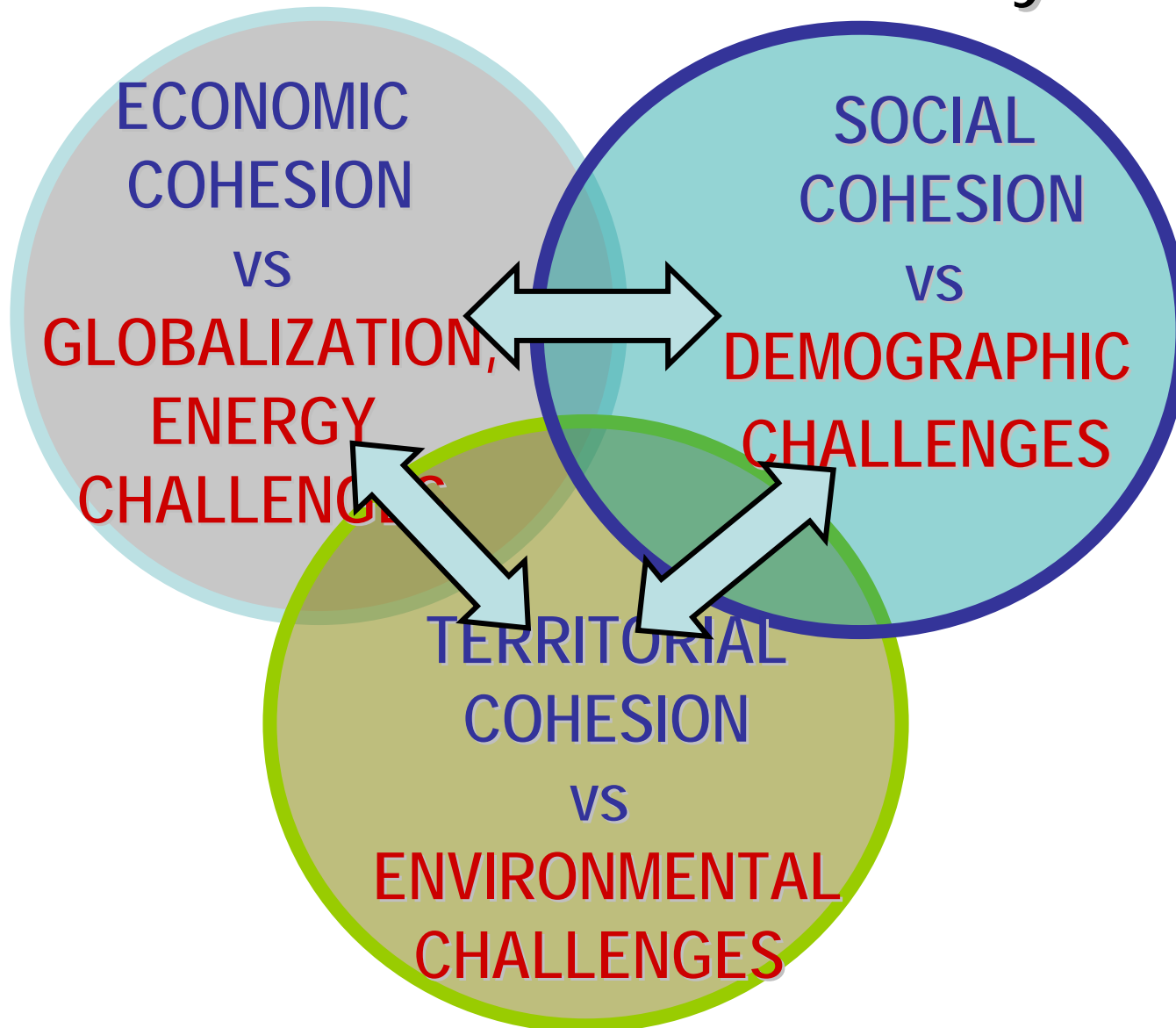
Approach

- National & transnational
- Integrate: strategic, spatial and investments planning
- Relate: long term development objectives and Operational Programs resources
- Working with regional and local actors:
 - Polycentric system
 - Metropolitan network
 - Second tier of cities
 - Rural areas
 - National regional policy

Approach

- Defining national competitive profile
 - Based on regional potential
 - Involving regional & local actors in the process
- Defining national roles as MS of EU
 - Based on regional involvement
 - Involving local actors based on awareness and acceptance of their potential roles at regional/national/transnational level
- Defining and committing
 - to a national strategic concept of territorial development and
 - to a national regional development policy
- Identifying the main projects
 - Of national relevance
 - Of regional relevance

Territorial Cohesion and Synergy



Territory, communities, economic development

- Defining the polycentric structure, potential roles and tasks
 - Metropolitan poles
 - 2nd level cities' network
 - Urbanizing network
 - Urban-rural relationship
- Defining the national regional development policy
 - Spatial integrated regional development approaching
 - Regional-national spatial development
- Defining the regional rural development policy component
 - 89% of Romania's surface is rural
 - App. 50% of Romania's population lives in countryside
 - Rural-urban relationship
 - Urbanization process and network
- Cross-borders territorial cooperation
- Transnational territorial cooperation
 - Baltic Sea – Black Sea
 - West-East
 - Danube Complex Region
 - Tisa Catching Basin
 - Carpathian Mega Region

Building partnerships

- Line ministries
- Management authorities
- Regional Development Agencies
- Federation of Romanian Local Authorities
- Universities
- National and regional bodies

Plan: Organizing CEE Technical meeting in December 2007

Organizing a technical level meeting in order to explore the potential for CEE Countries in strengthening their cooperation towards common goals:

- Exploring the roles of the CEE Countries within the EU (comparative & competitive advantages)
- Exploring common and complementary goals
- Exploring the potential for partnership towards achieving common and complementary goals
- Thinking the resources in terms of the agreed goals
- Consolidation of social, economic, territorial triade of the cohesion policy

THANK YOU!

Mihaela Vrabete

mihaela.vrabete@mdlpl.ro

mvrabete@yahoo.com